

LoanExpert Quick Start Documentation

Introduction:

LoanExpert allows for quick calculation of loan or mortgage variables including payment, length, interest rate, price, and more. Both simple and complex loan calculations can be made. In addition, an amortization table can be generated for any loan to provide detailed information on the loan for each payment. This can all be done from any Palm OS handheld and Windows PC. This document provides information on the handheld software, as the PC software has its own complete help file system. You may want to print this document for easier reference.

Installation:

To install the software, download the setup file (usually LoanExpertPalm_Setup.exe) to your PC. Then, double click the .exe setup file to start the PC installer. The installer will install the PC software first. When the software is first run after installing, the handheld software will be installed.

Registration:

The software is initially installed as a trial version. After purchasing, a 5-digit registration code is provided. This 5-digit code is entered in the blank area on the startup screen on the handheld or on the PC software from the Help / Register menu. Once the registration code is entered on either the handheld or PC, the registration code will be transferred to the other version when synced. The registration code unlocks the full version features. No additional installation is required.

Getting Started:

The following screens and descriptions explain many of the features in LoanExpert. The software was designed to be easy and intuitive, so it will be easy to get started. This documentation will help explain some of the advanced features.

To start the software on the handheld, tap the LoanExpert icon. On Palm OS handhelds, this icon may be in the Unfiled category. From the Home (icon) screen on your handheld, tap the drop down list in the upper right corner, then select Unfiled to list any uncategorized icons. A category can be assigned to the icon to make it easier to find. Consult your handheld manual for how to categorize icons.

Main List Screen:

LoanExpert

Saved Loan Scenarios:

Boat loan

Car loan

House loan

[New Loan] [Prefs] Find:

Upon startup, the list of saved loans is displayed. Simply tap any record in the list to view the loan's details. Or, if no loans have been saved, tap the New Loan button at the bottom of the screen to create a new blank loan.

From the list screen, the user may scroll through the list with the onscreen scrollbar or the hardware scroll buttons. Also, the Quick Find Area can be used to jump to a certain loan by entering the first few letters in the loan name.

Tap the Prefs button to set or change the preferences, including the password, currency symbol, escrow calculation, and more.

Loan Detail Screens:

Loan Details

Name: Car loan [Note icon]

Sales Price: 25000 [=]

Amt Down: ▼(\$) 0 [=]

Loan Amount: 25000

Rate (APR) %: ▼US 6.500 [=]

Length: ▼(years) 5 [=]

Pmt: ▼(monthly) 489.15 [=]

Balloon Amt: 0 [=]

Start Date: ▼ 5/12/2005 [1 2 3 4]

[Additional Inputs...] [5 6 7 8]

[9 0 . C]

[Done] [Copy] [Delete] [More...]

The Details screen displays the details view of any loan. Simply enter the values for each field. You can easily move to the next field while entering data using the Enter key or graffiti stroke (/).

To perform a basic loan calculation, enter all but one value of price, interest rate, length, and payment. Tap the calculate button (=) to the right of the other value not entered to calculate that value.

The loan value will be calculated based on the price and down payment. Down payment may be left blank if you do not want to make a down payment. Balloon amount may also be left blank. When calculating payment (Pmt), the value will be PITI payment on the loan plus taxes and insurances, if entered.

Notes may also be saved with any loan. Tap the Note icon to the right of the loan name to enter or edit the notes for the displayed loan.

Additional Inputs

Annual amounts for:

Tax: ▼(\$) 1000

Ins: ▼(\$) 800

PMI: ▼(\$) 300

Additional Closing Costs:

Loan Points: 1 (\$950.00)

Other: ▼(\$) 500

[1 2 3 4]

[5 6 7 8]

[9 0 . C]

[Back]

Finally, the buttons at the bottom of the details screen will save the record (Done), duplicate the record (Copy), delete the record, or display More information on the loan (overview and amortization table).

Tap the Additional Inputs button to enter taxes, insurance, PMI, loan points and other closing costs. Values may be entered as dollar amounts or % of price or loan amounts.

The on-screen numeric keypad can be used to enter values quickly on either screen.

Overview Screen:

Overview	
Sales Price:	100000
Loan Amount:	95000
APR: 7.000%	Len: 25 years
Total Payments:	253932.00
Total Interest:	106432.00
Payment Details:	
Total: 846.44	P & I: 671.44
Tax: 83.33	Ins: 91.67
Closing Cost Estimate:	
Total: 6800.00	Dwn: 5000
Escr: 350.00	Fees: 1450.00
Back	Amortization...

The Overview screen displays a summary of the loan at the top of the screen.

The total of all payments, and the total interest paid over the life of the loan are also calculated and displayed.

Payment details will break down the payment into P & I, taxes, and insurance. Taxes and insurance for each payment are calculated from the values entered on the Additional Inputs screen. Insurance includes regular insurance and PMI.

A closing cost estimate is included on the bottom of this screen. This is only an estimate. The total closing costs are calculated by adding the down payment amount, escrow estimate, and fees.

The escrow total is calculated based on the preferences settings for escrow calculations. Fees include the Other Fees and Loan Points from the Additional Inputs screen.

The buttons at the bottom of this screen will go back to the loan details screen or display the amortization table.

Amortization Screen:

Amortization			
#	M.YY	Prin	Int
1	5.05	117.27	554.17
2	6.05	117.96	553.48
3	7.05	118.65	552.79
4	8.05	119.34	552.10
5	9.05	120.03	551.41
6	10.05	120.73	550.71
7	11.05	121.44	550.00
8	12.05	122.15	549.29
9	1.06	122.86	548.58
10	2.06	123.58	547.86
11	3.06	124.30	547.14
12	4.06	125.02	546.42

Back Overview... Goto:

The Amortization screen displays the complete amortization table for the loan.

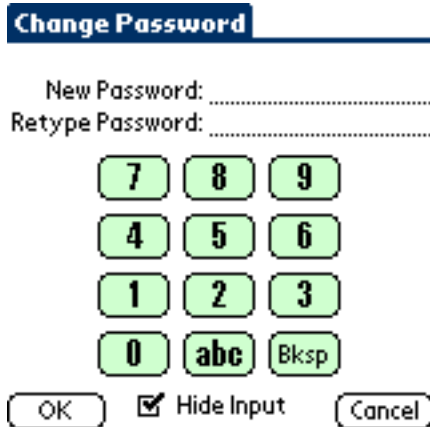
The first column is the loan payment number. The second column displays the payment date. Use the drop down arrow above this column to change the date format.

The right two columns can display that payment's principal or interest, the total principal paid to date, the total interest paid to date, the beginning loan balance or the ending loan balance. Use the drop down arrows above each column to select the information to display. Default values for these columns can be specified on the Preferences screen.

Use the scroll bar on the right to scroll through the table, or enter a payment number in the Goto area to jump to a certain payment number in the amortization table.

The buttons at the bottom of this screen will go back to the loan details screen or display the loan overview.

Setting or Changing the Password:



Change Password

New Password:

Retype Password:

7 8 9

4 5 6

1 2 3

0 abc Bksp

OK Hide Input Cancel

For additional security, a password can be used. To set or change the password, tap the Password button on the Preferences screen.

Enter the old password if one exists, then enter the new password and retyped password. The **abc** button will bring up the on screen keyboard for easier text entry. The Bksp button will backspace one character.

LoanExpert data is not encrypted, but the password does prevent unauthorized users from viewing your loan information.

Menu Options:

A menu system is available to perform additional functions on the handheld. To view the menu system, tap the Menu silkscreen icon (just below the Home silkscreen icon). Also, the title bar for the application can be tapped while the application is running to display the menu system.

Edit Menu:

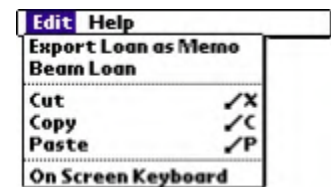
The Edit menu offers the following options:

Export Loan as Memo while viewing any loan, select this option to export the loan information as text to a new memo. This will export loan details and the overview. It does not export the amortization table as the memo cannot hold this much text.

Beam Loan while viewing any loan, select this option to beam the current loan to another LoanExpert user. When the receiving user starts LoanExpert on their handheld again, the new loan will be imported with no additional work. Note that the receiving user must import each loan before receiving another loan.

Cut/Copy/Paste standard functions using graffiti.

On Screen Keyboard this menu option will display the on screen keyboard for entering text or numbers. This is useful for handhelds that do not have a virtual graffiti area.

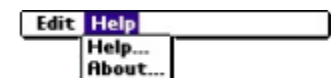


Help Menu:

The Help menu offers the following options:

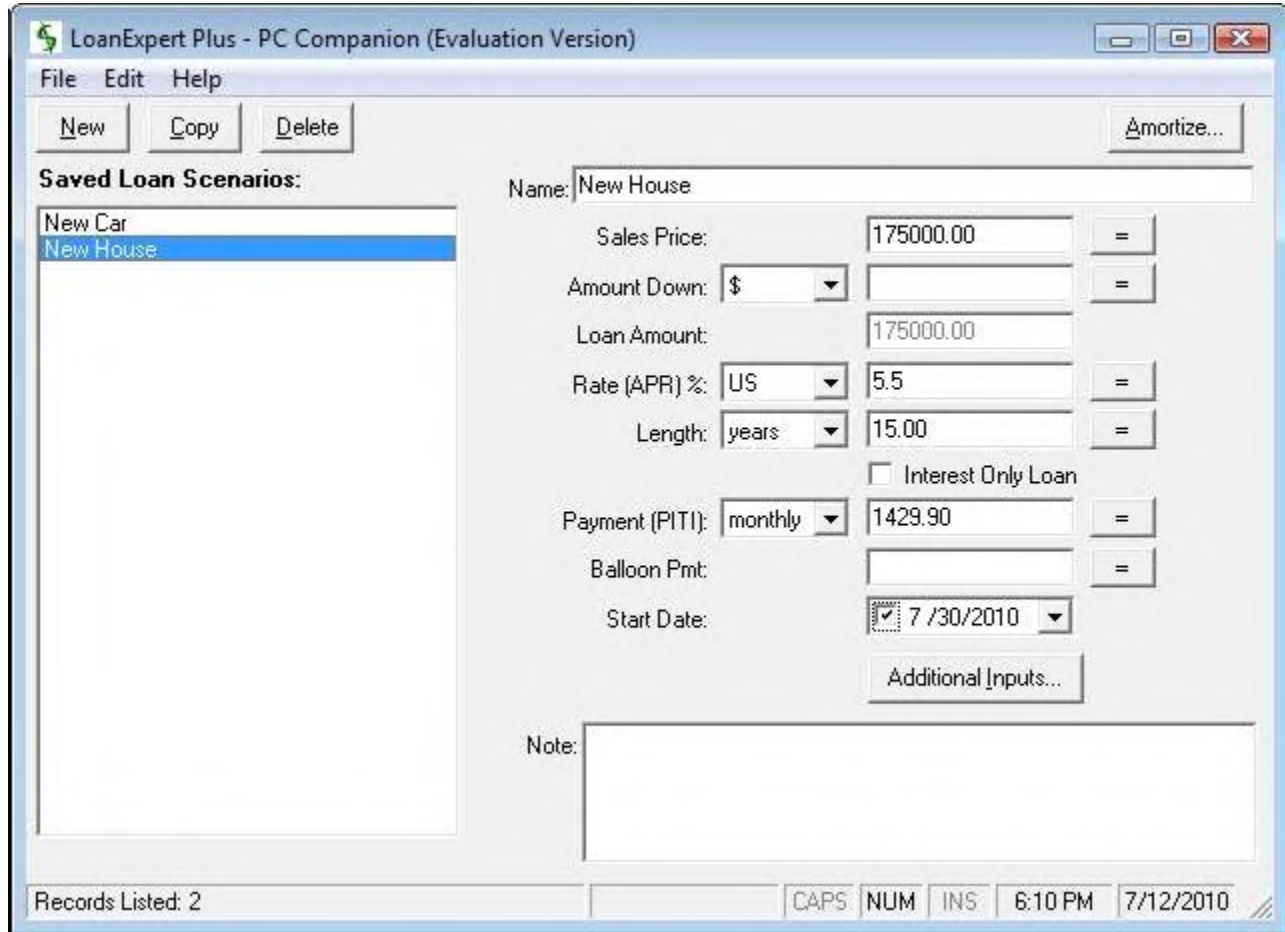
Help selecting this option will display the help file available on the handheld.

About selecting this option will display the About screen, including the version number.



LoanExpert Desktop:

The PC software includes all of the features on the handheld software, plus other features specific to the desktop software. Features available only on the desktop software include: printing selected records, printing all records, importing records from delimited text files (CSV, etc.), exporting records to a CSV file, and more. Consult the help file on the PC desktop software for further information on the desktop features.



Conclusion:

If you are just evaluating or have already purchased LoanExpert - Thanks!

If you have questions about the software, or cannot find an answer to a problem at our site, please email our support staff. We will work hard to resolve your issue and answer your questions.

